

# VALVEMATE™ Valve Actuator

Automates HPLC and LC Techniques

---



- Advanced valve switching instrument saves time to free up lab personnel for other tasks
- Extends column life by allowing sample runs on one column while equilibrating or conditioning another column
- Controls Rheodyne six- and ten-port high-pressure valves with up to six positions. Low-pressure valve options include Hamilton and Rheodyne valves ranging from four to eight ports and up to eight positions

## Applications:

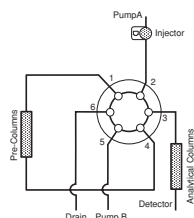
- Unattended column switching for purity checks
- Solvent switching in trace enrichment procedures
- Column and pre-column backflushing
- Fraction collection in preparative systems

# VALVEMATE™ Valve Actuator *Technical Specifications*

High-Pressure Valves	Rheodyne 7000, 2 position, 6 port, switching Rheodyne 7010, 2 position, 6 port, injection Rheodyne 7030, 2 position, 6 port, 3-way Rheodyne 7040, 2 position, 6 port, 4-way Rheodyne 7060, 6 position, selection Rheodyne 7610, 2 position, 10 port, switching Rheodyne 9010, 2 position, 6 port, injection Rheodyne 9030, 2 position, 6 port, 3-way Rheodyne 9060, 6 position, selection																
Low-Pressure Valves	Rheodyne 5011, 6 position, selection Rheodyne 5012, 6 position, selection Rheodyne 5031, 2 position, 6 port, 3-way Rheodyne 5032, 2 position, 6 port, 3-way Rheodyne 5041, 2 position, 6 port, 4-way Rheodyne 5042, 2 position, 6 port, 4-way Hamilton 86905 HVX 4-4, 2 position, 4-opposing Hamilton 86913 HVX 4-5, 4 position, selection Hamilton 86915 HVX 6-5, 6 position, selection Hamilton 86918 HVX 8-5, 8 position, selection																
Display	Two line, 16 characters per line																
Remote Control	Inputs for moving valve one position at a time in clockwise or counter-clockwise direction																
Software Control	Via RS-232 or Gilson Serial Input/Output Channel control (GSIOC), valve can be moved to any position																
Voltage	100-120 VAC, 200 - 240 VAC universal input																
Typical Valve Movement Time	<table><tr><th>Movement</th><th>Time (m/sec)</th><th>Movement</th><th>Time (m/sec)</th></tr><tr><td>45°</td><td>62.5</td><td>120°</td><td>166.7</td></tr><tr><td>60°</td><td>83.3</td><td>135°</td><td>187.5</td></tr><tr><td>90°</td><td>125.0</td><td>180°</td><td>250.0</td></tr></table>	Movement	Time (m/sec)	Movement	Time (m/sec)	45°	62.5	120°	166.7	60°	83.3	135°	187.5	90°	125.0	180°	250.0
Movement	Time (m/sec)	Movement	Time (m/sec)														
45°	62.5	120°	166.7														
60°	83.3	135°	187.5														
90°	125.0	180°	250.0														
Operating Temperature	0° to 40° C																
Dimensions (w x d x h)	12.7 x 39.0 x 15.0 cm (5.0 x 15.4 x 5.9 in)																
Weight	6.0 kg (13.3 lbs)																

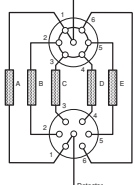
## High-pressure applications

### Sample Cleanup

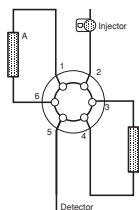


### Five Column Switching

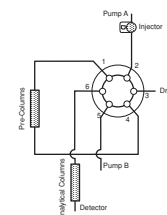
In multi-user labs, two VALVEMATES operating in tandem allow easy selection from up to five columns.



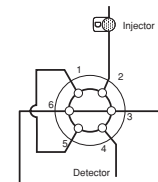
### Two Column Switching



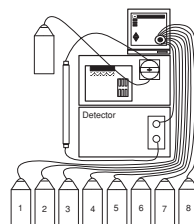
### Sample Enrichment



### Column Backflushing

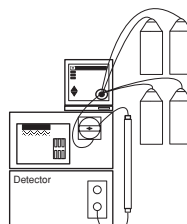


## Low-pressure applications



### Fraction Collection

The VALVEMATE can function as a preparative fraction collector with detector eluent directed to a low-pressure valve.



### Mobile Phase Selection

With a low-pressure valve connected to the pump inlet, the VALVEMATE can switch solvents to create a step gradient. This can also provide a way to automatically flush salts from the pump.

**ISO 9001 Certified**

### World Headquarters

#### Gilson, Inc.

3000 W. Beltline Hwy., P.O. Box 620027, Middleton, WI 53562-0027, USA  
Telephone: (1) 800-445-7661 or (1) 608-836-1551 • Fax: (1) 608-831-4451

#### Gilson S.A.

19, Avenue des Entrepreneurs - B.P. 45, 95400 VILLIERS LE BEL, France  
Telephone: (33) 1-34-29-50-00 • Fax: (33) 1-34-29-50-20

**World Wide Web:** [www.gilson.com](http://www.gilson.com)

**E-mail:** [sales@gilson.com](mailto:sales@gilson.com), [service@gilson.com](mailto:service@gilson.com), [training@gilson.com](mailto:training@gilson.com)



303013-03, Printed in the U.S.A., May 2001, Specifications subject to change without notice